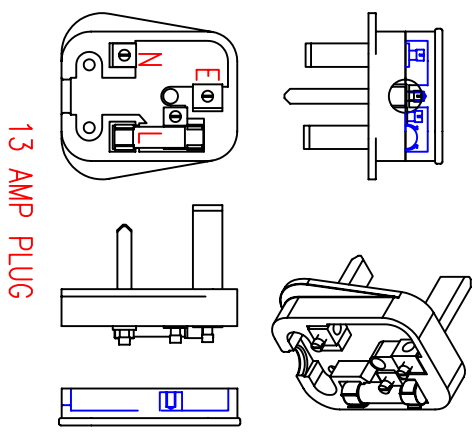
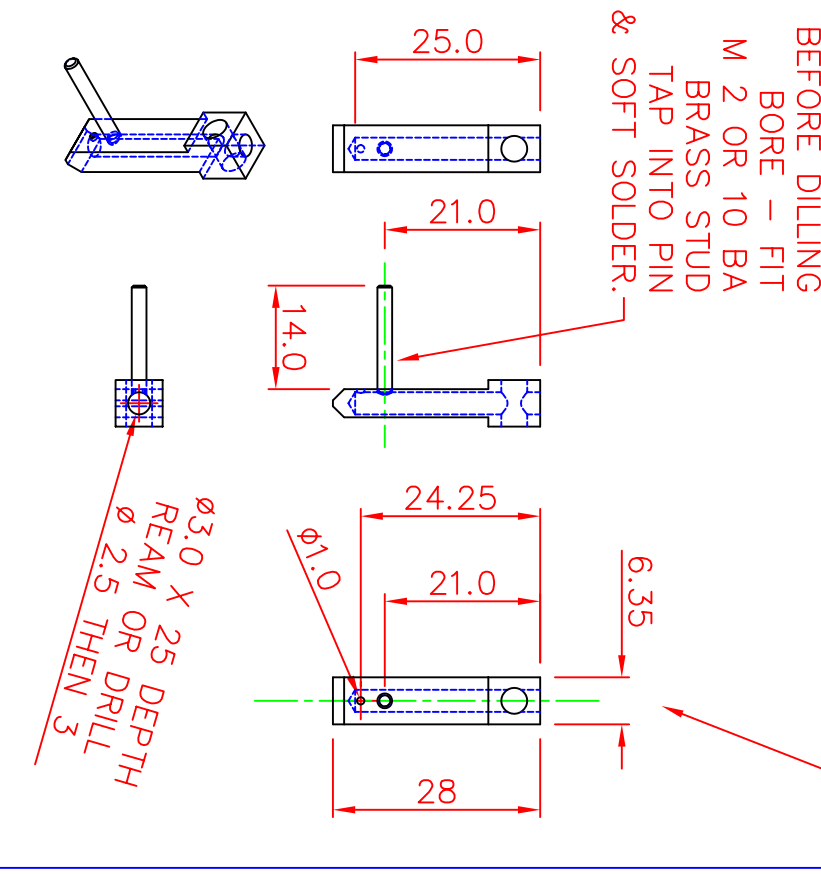
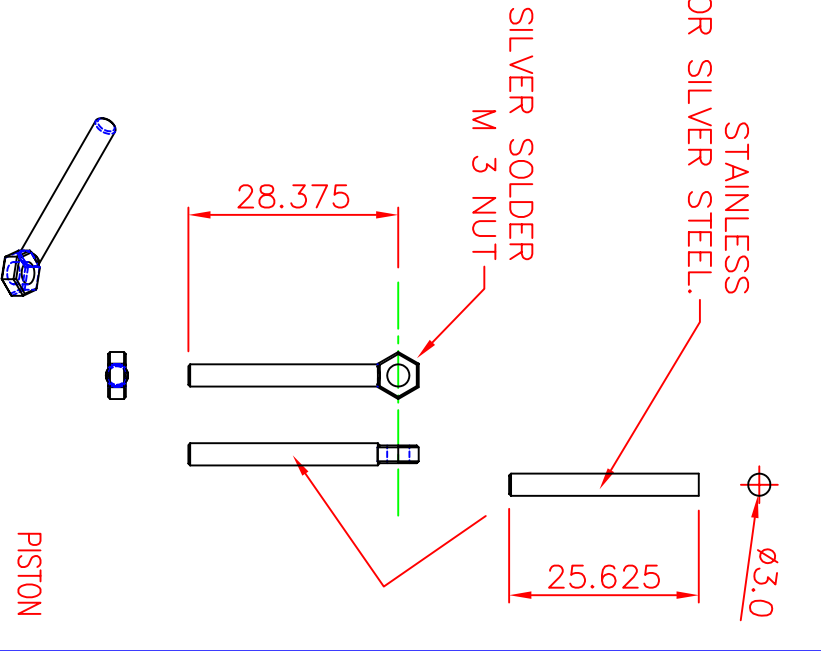
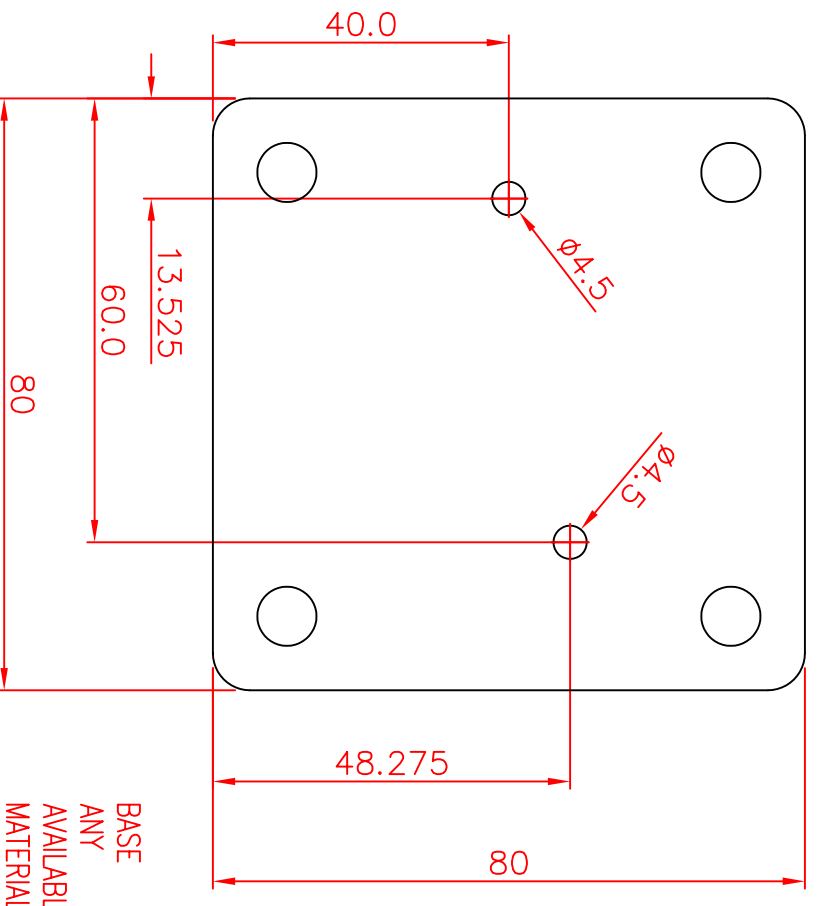
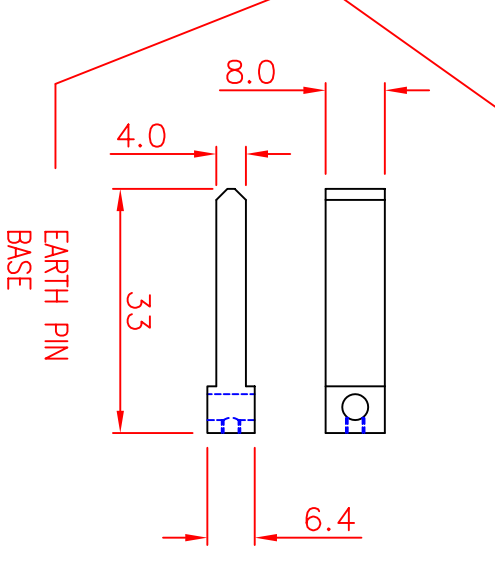
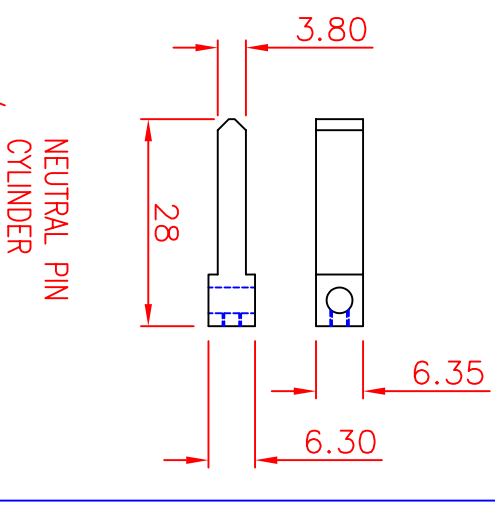
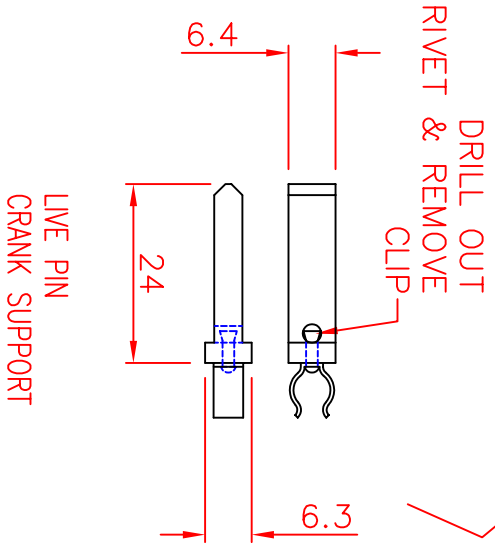
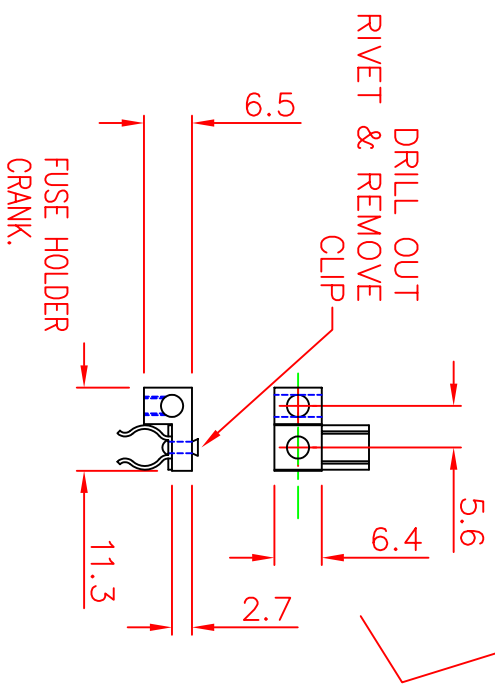
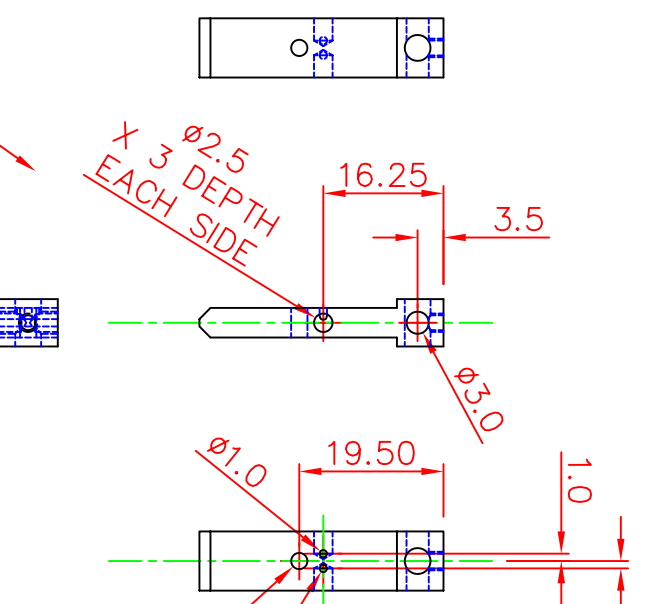
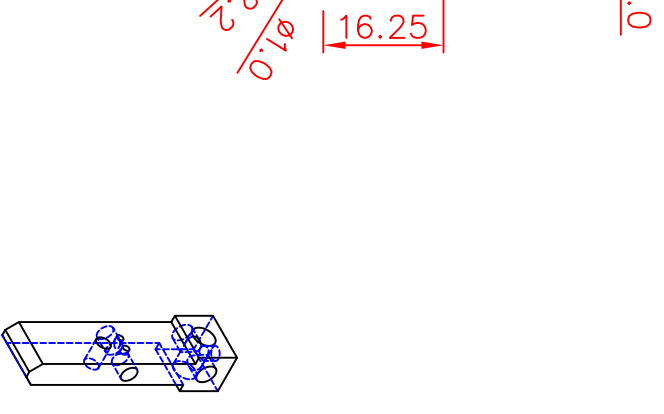
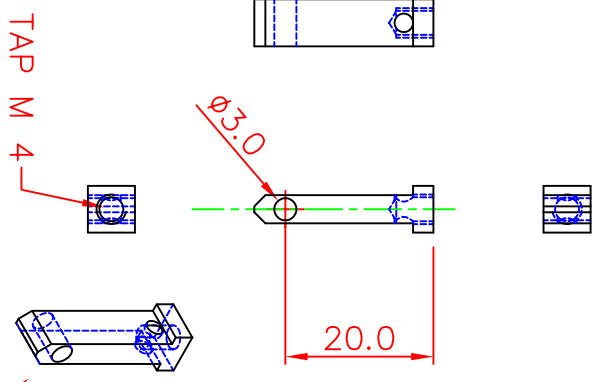
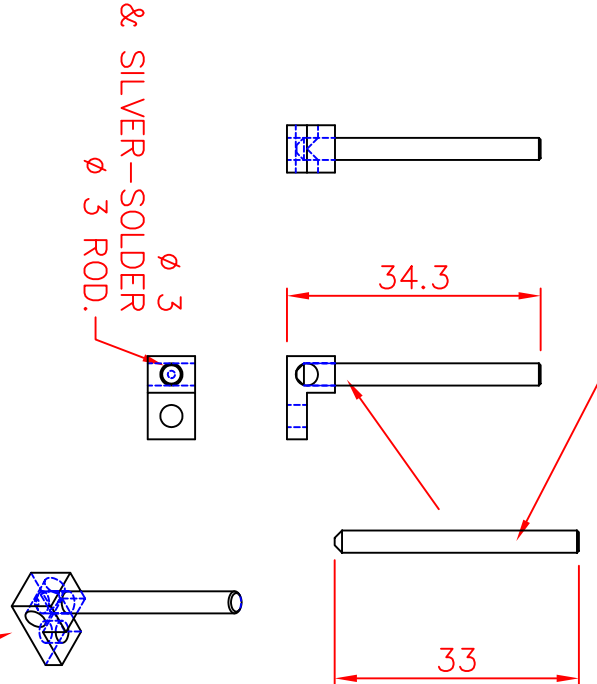


FIRST ANGLE PROJECTION

NOVELTY ENGINE NOTES:

YOU DO NOT NEED A LATHE IF YOU CAN FIND SOMETHING TO MAKE A FLYWHEEL.
 THE BORE IN THE NEUTRAL PIN WAS DONE ON A NORMAL BENCH DRILL USING THE EXISTING TAPPED HOLE AS A GUIDE TO DRILL CENTRALLY. BIT OF LAPPING WAS NEEDED.
 IF YOU CAN NOT FIND AN OLD STYLE PLUG YOU CAN MAKE THIS FROM ANYTHING SIMILAR. I DON'T THINK THE NEW ONES WITH INSULATED PINS WOULD WORK.
 NOTHING HAS TO BE THAT ACCURATE, CRANK IS BETTER A BIT "LOOSE".
 HAD TO USE 100 PSI AIR TO GET RUNNING AT FIRST & PLENTY OF OIL. NOW RUNS HAPPILY AT 50 PSI.
 HAVE FUN.

STAINLESS OR SILVER STEEL. $\phi 3.0$



SCALE	NTS	DRAWN	MJG 28:08:07
CHECKED		APPROVED	

Project 13 AMP PLUG OCLATING ENGINE

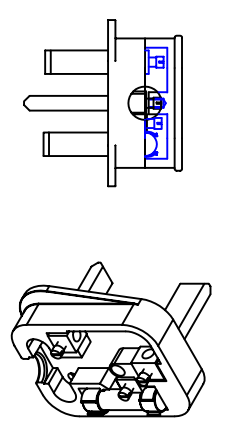
Title GENERAL ARRANGEMENT

DRAWING No.	0230-001	REVISION	A
-------------	----------	----------	---

IF IN DOUBT ASK - NEVER TAKE SCALE MEASUREMENTS REMOVE ALL SHARP EDGES

DO NOT SCALE: CONTRACTOR TO CHECK DIMENSIONS AND REPORT ANY OMISSIONS OR ERRORS.

NOTES:



13 AMP PLUG

D			
C			
B			00:00:00
Rev.		Dr. Ch. Date	

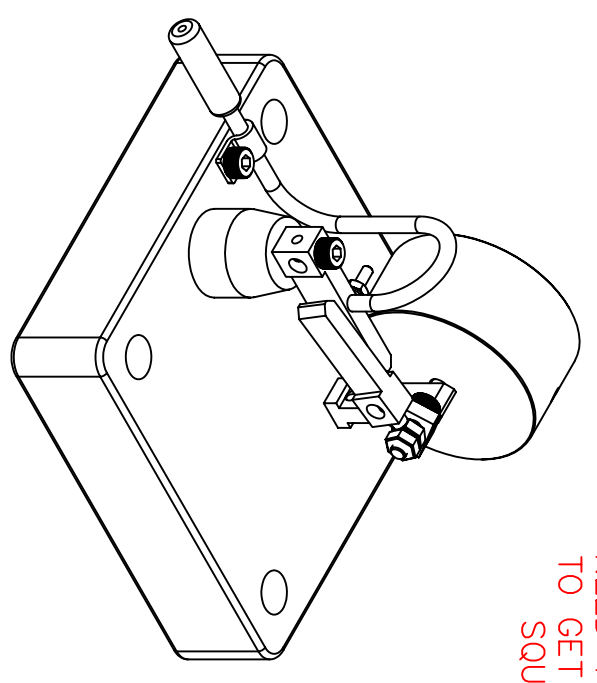
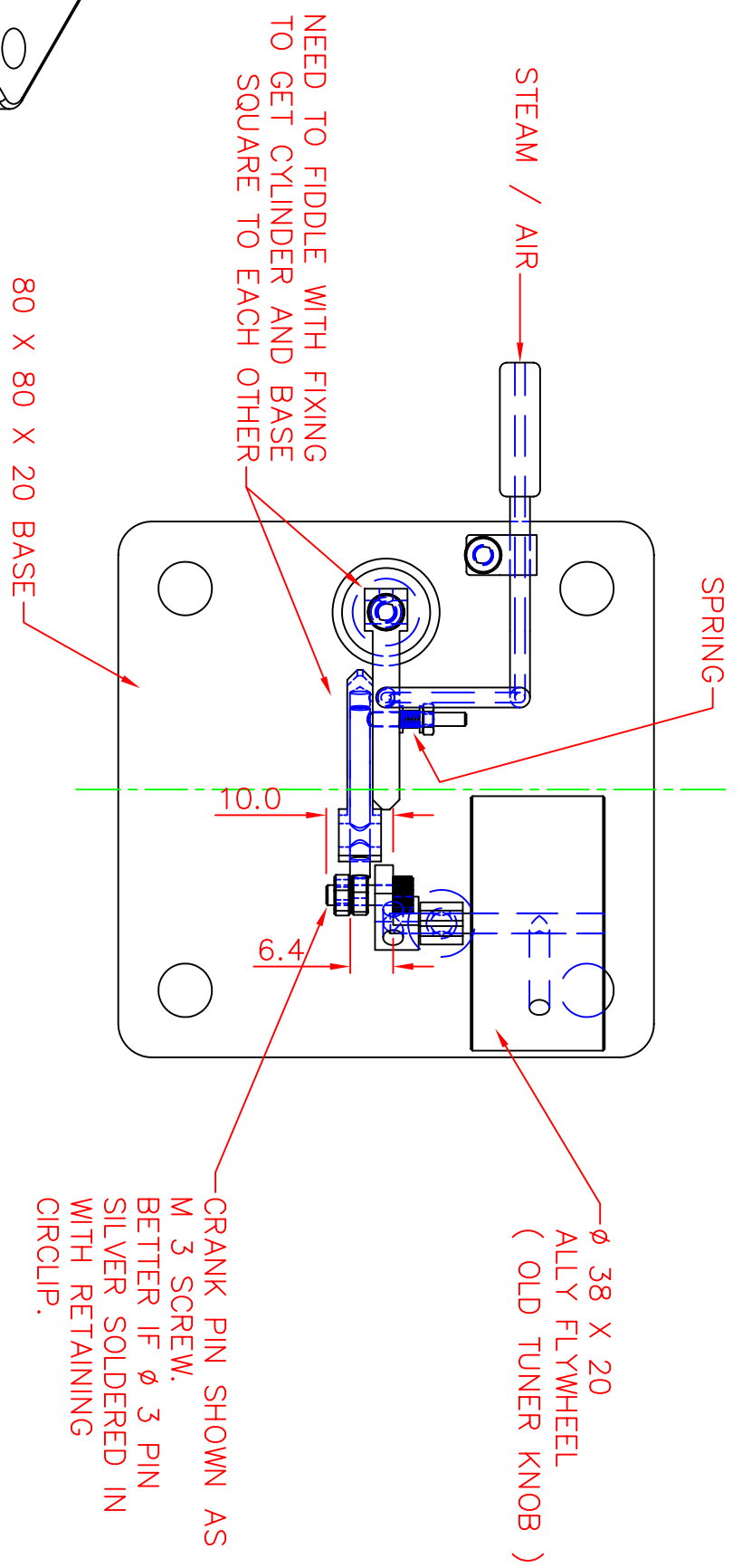
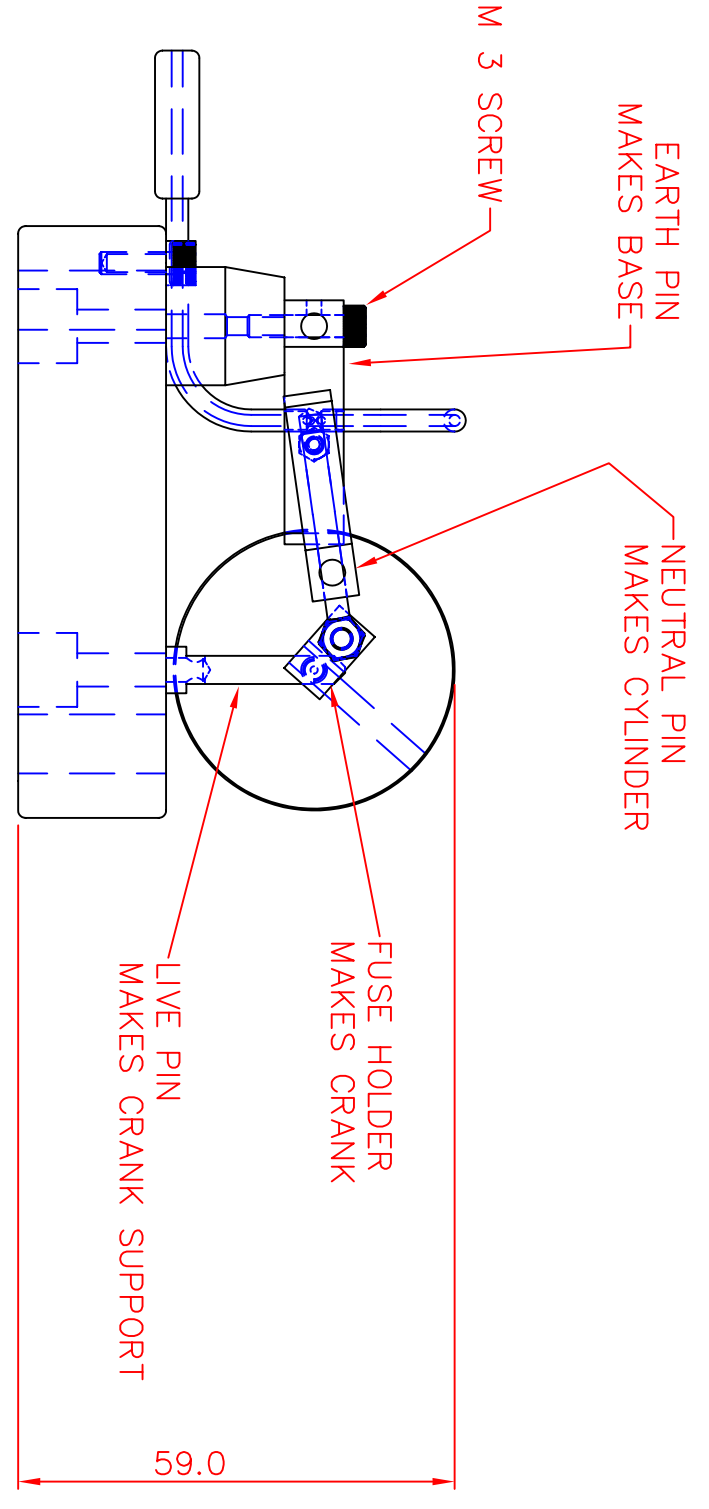
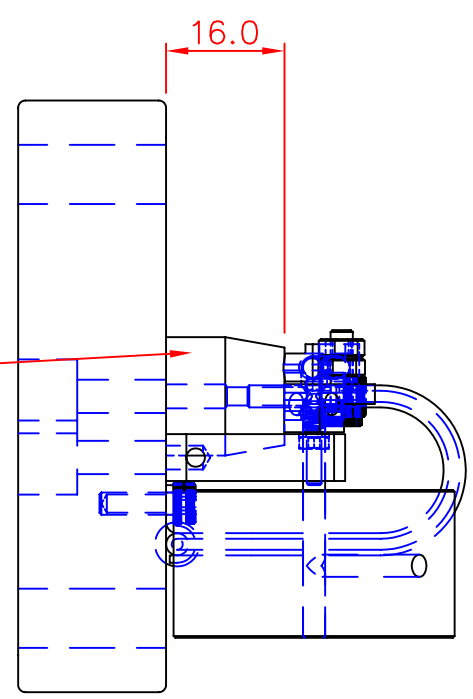
SCALE	NTS	DRAWN	MJG 28:08:07
CHECKED		APPROVED	

Project 13 AMP PLUG OCLATING ENGINE

Title GENERAL ARRANGEMENT

DRAWING No.	0230-000	REVISION	A
-------------	----------	----------	---

For: APPROVAL, INFORMATION, TENDER, CONTRACT, CONSTRUCTION



IF IN DOUBT ASK - NEVER TAKE SCALE MEASUREMENTS

REMOVE ALL TOEWINGS UNLESS OTHERWISE STATED. SHARP EDGES. 0 REF. PAGE 1.02. 2. MET. DIMS 3. 01. 4. 02. 5. 03.