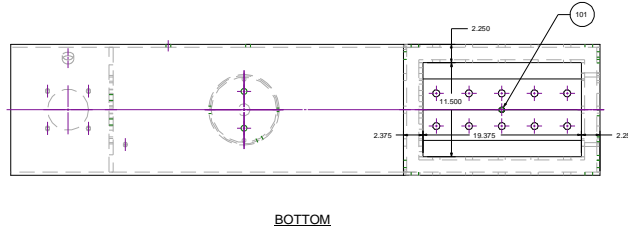
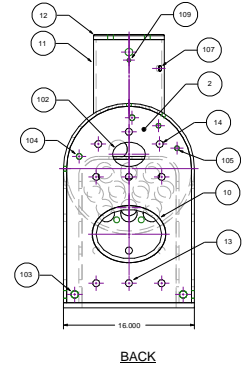
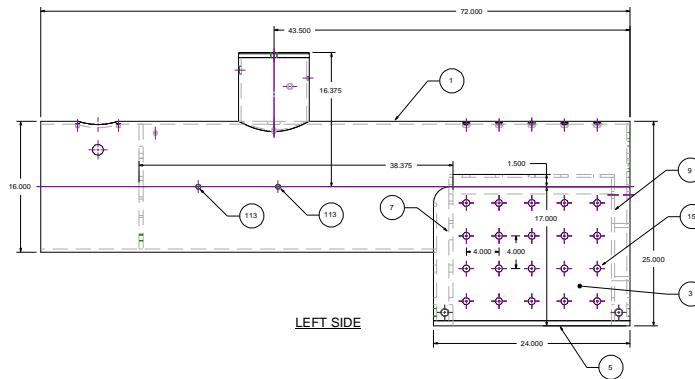
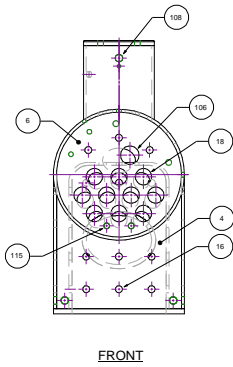
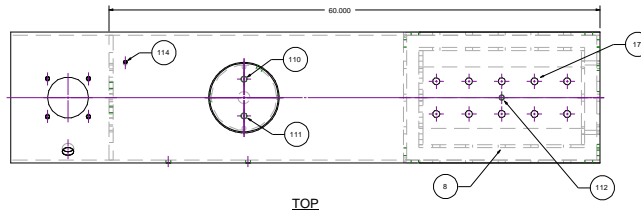


**SCHEDULE OF OPENINGS**

| Item | Qty | Part Name             | Description                         | Material |
|------|-----|-----------------------|-------------------------------------|----------|
| 101  | 1   | Fusible Plug          | 1/2" NPT Class 3000 Half Coupling   | SA105    |
| 102  | 1   | Hand Hole             | 3.000" X 4.000"                     |          |
| 103  | 6   | Washout               | 3/4" NPT Class 3000 Half Coupling   | SA105    |
| 104  | 2   | Water Gauge           | 1/2" NPT Class 3000 Half Coupling   | SA105    |
| 105  | 2   | Try Cock              | 3/8" NPT Class 3000 Half Coupling   | SA105    |
| 106  | 1   | Inspection / Washout  | 1 1/2" NPT Class 3000 Half Coupling | SA105    |
| 107  | 1   | Whistle               | 1/2" NPT Class 3000 Half Coupling   | SA105    |
| 108  | 1   | Main Steam Outlet     | 3/4" NPT Class 3000 Half Coupling   | SA105    |
| 109  | 1   | Pressure Gauge        | 1/4" NPT Class 3000 Half Coupling   | SA105    |
| 110  | 1   | Whistle               | 1/2" NPT Drilled and Tapped         |          |
| 111  | 1   | Safety Valve          | 1/2" NPT Drilled and Tapped         |          |
| 112  | 1   | Injector Steam Supply | 3/8" NPT Class 3000 Half Coupling   | SA105    |
| 113  | 2   | Feedwater             | 3/8" NPT Class 3000 Half Coupling   | SA105    |
| 114  | 1   | Blower Valve          | 1/4" NPT Class 3000 Half Coupling   | SA105    |
| 115  | 2   | Washout               | 1/2" NPT Drilled and Tapped         |          |

**BILL OF MATERIAL**

| Item | Qty | Part Name          | Description                       | Material |
|------|-----|--------------------|-----------------------------------|----------|
| 1    | 1   | Barrel             | 16" SCH 30 Seamless Pipe          | SA106-B  |
| 2    | 1   | Back Head          | .375" Plate                       | SA516-70 |
| 3    | 2   | Side Sheet         | .375" Plate                       | SA516-70 |
| 4    | 1   | Throat Sheet       | .375" Plate                       | SA516-70 |
| 5    | 1   | Mud Ring           | .625" Plate                       | SA516-70 |
| 6    | 1   | Front Flue Sheet   | .500" Plate                       | SA516-70 |
| 7    | 1   | Rear Flue Sheet    | .500" Plate                       | SA516-70 |
| 8    | 2   | Firebox Side Sheet | .375" Plate                       | SA516-70 |
| 9    | 1   | Firebox Rear Sheet | .375" Plate                       | SA516-70 |
| 10   | 1   | Door Ring          | 2.250" Plate                      | SA516-70 |
| 11   | 1   | Dome               | 8" SCH 40 Seamless Pipe           | SA106-B  |
| 12   | 1   | DomeHead           | .625" Plate                       | SA516-70 |
| 13   | 6   | Back Stay          | .750" x 2.750"                    | SA36     |
| 14   | 3   | Through Stay       | .750" x 60.500"                   | SA36     |
| 15   | 40  | Side Stay          | .750" x 2.750"                    | SA36     |
| 16   | 6   | Throat Stay        | .750" x 2.875"                    | SA36     |
| 17   | 10  | Crown Stay         | .750" x 7.125"                    | SA36     |
| 18   | 10  | Tubes              | 2" O.D. x 11 GA. x 38.75" Approx. | SA178-A  |



|   |                  |          |
|---|------------------|----------|
| <b>SteamSmith</b>   |                  |          |
| SMITH ENGINE NO. 1<br>BOILER REPLACEMENT<br>GENERAL ARRANGEMENT |                  |          |
| DATE<br>13-AUG-2007   | DWG NO<br>SE1-01 | REV<br>A |