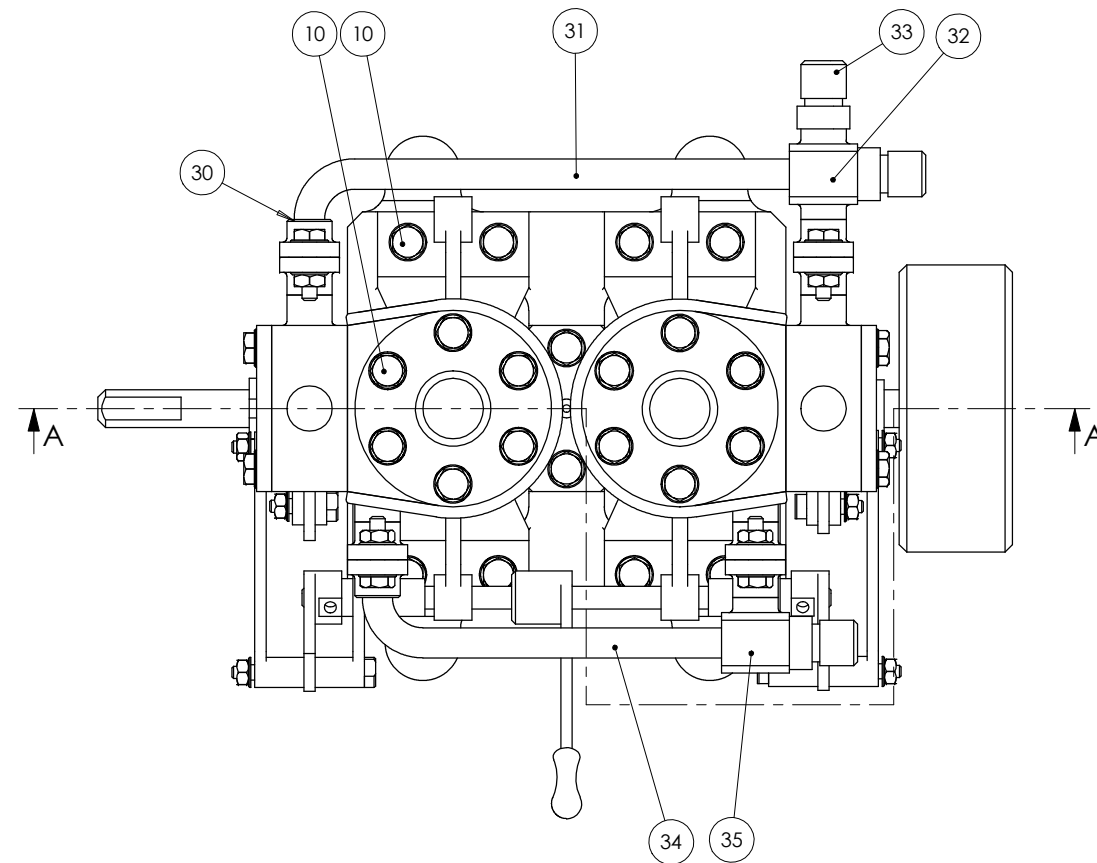
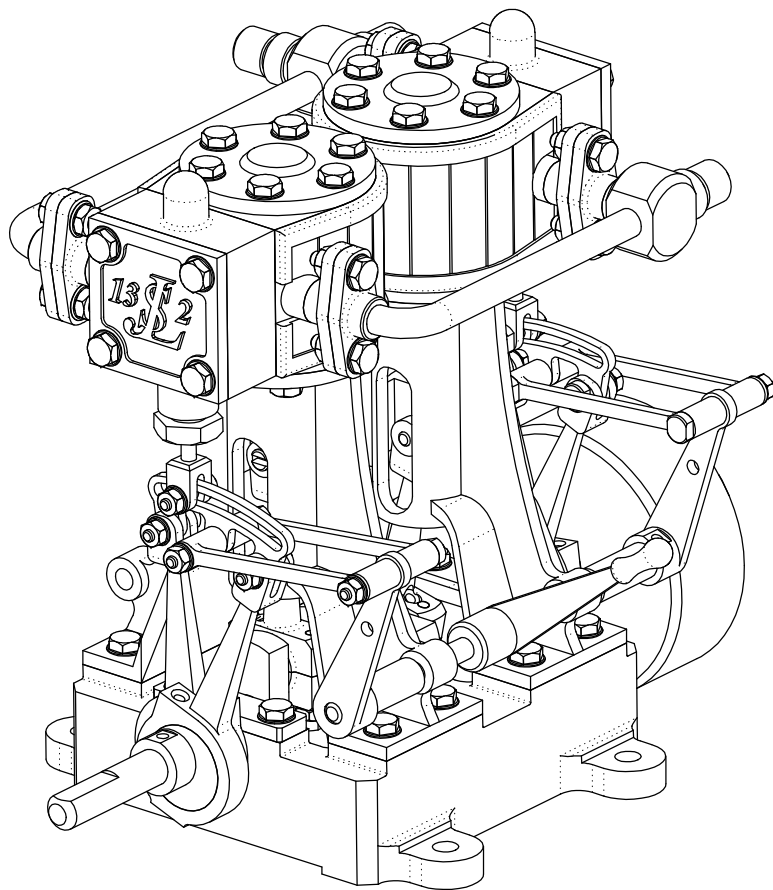
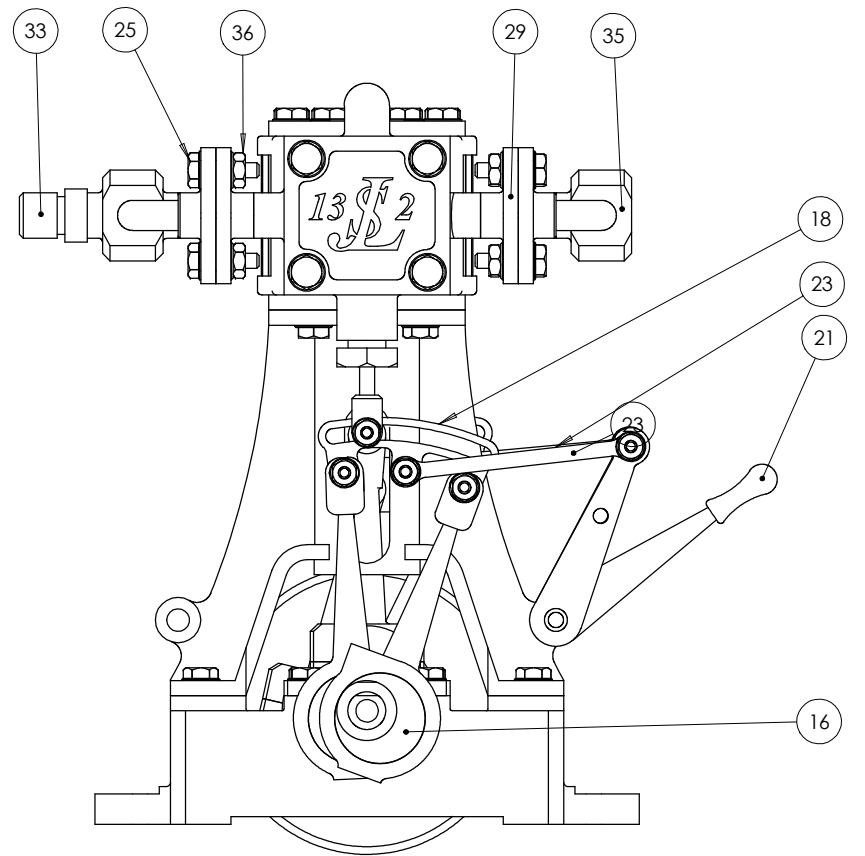


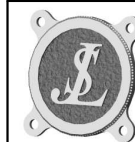
A-A



Rep	Qty	Désignation	Matière	Observations	N° Plan
1	1	Bati Peint	Laiton	Peinture	MV-003
2	2	Glissière Peinte	Laiton	Peinture	MV-006
3	2	Culasse Inferieure	Laiton		MV-004
4	2	Palier Exterieur	Bronze	Autolubrifiant	MV-009
5	1	Vilbrequin	Inox		MV-009
6	2	Bielle	Laiton		MV-008
7	2	Coulisseau	Bronze		MV-008
8	2	Piston	Bronze		MV-008
9	2	Tige Piston	Inox		MV-008
10	26	Vis HM2-06	Laiton		
11	1	Cylindre	Laiton		MV-002
12	1	Cylindre Sym	Laiton		MV-002
13	2	Boite Vapeur	Laiton		MV-004
14	2	Couvercle	Laiton	Gravure chimique	MV-004
15	1	Volant	Laiton		MV-009
16	2	Excentrique	Inox		MV-009
17	4	Bielle Distribution	Laiton		MV-007
18	2	Coulisse	Inox		MV-007
19	2	Culasse Superieure	Laiton		MV-004
20	2	Tige Distribution	Inox		MV-007
21	1	Commande Distribution	Inox		MV-007
22	2	Biellette Commande	Laiton		MV-007
23	4	Biellette Coulisse	Inox		MV-007
24	8	Vis HM2-16	Laiton		
25	16	Vis HM2-08	Laiton		
26	2	Tiroir Bague	Laiton		MV-007
27	2	Tiroir	Bronze		MV-007
28	1	Palier Interieur Sup	Bronze	Autolubrifiant	MV-009
29	6	Bride Moteur	Laiton		MV-005
30	2	Bride Tube 4x3	Laiton		MV-005
31	1	Tube Admission	Cuivre	Tube 4x3	MV-005
32	1	Collecteur Admision	Laiton		MV-005
33	3	Raccord D6	Laiton		MV-005
34	1	Tube Echappement	Cuivre	Tube 4x3	MV-005
35	1	Collecteur Echappement	Laiton		MV-005
36	12	Ecrou HM2	Laiton		
37	2	Pied de Bielle	Laiton		MV-008
38	1	Palier Interieur Inf	Bronze		MV-009
39	4	Axe Bielle	Inox		MV-007
40	10	Ecrou HM1_6	Laiton		
41	2	Presse Etoupe D3	Laiton		MV-004
42	2	Presse Etoupe D2	Laiton		MV-004
43	4	Tige M2-12	Inox	Pied de bielle	
44	2	Axe Tete de Bielle	Inox		MV-008
45	6	Axe Coulisse	Inox		MV-007
46	2	Calorifuge	Laiton + Bois		

Cette distance représente 100mm

Indice a = modifications du 14-08-02



Moteur à vapeur bicylindre modèle JLS 13-2

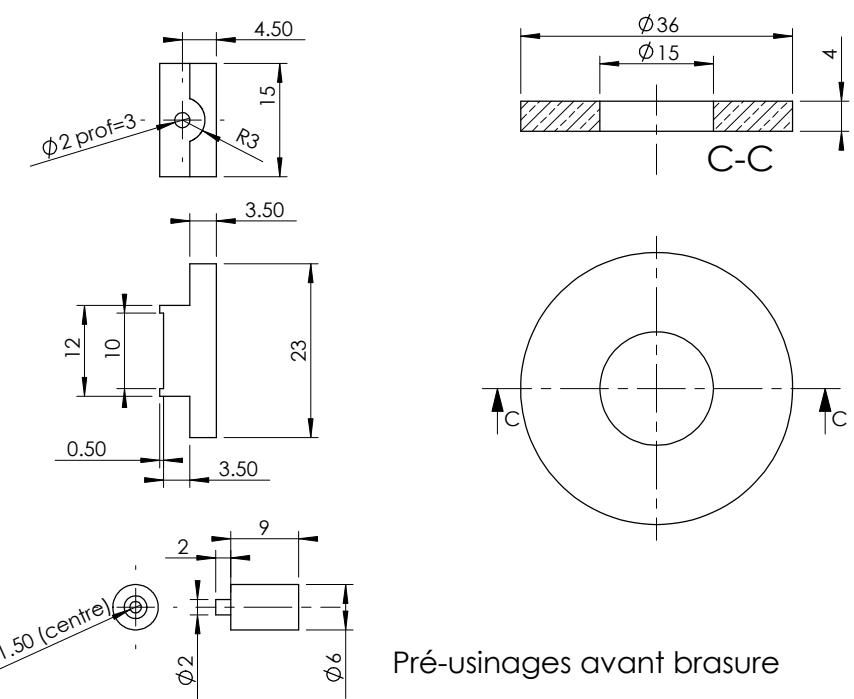
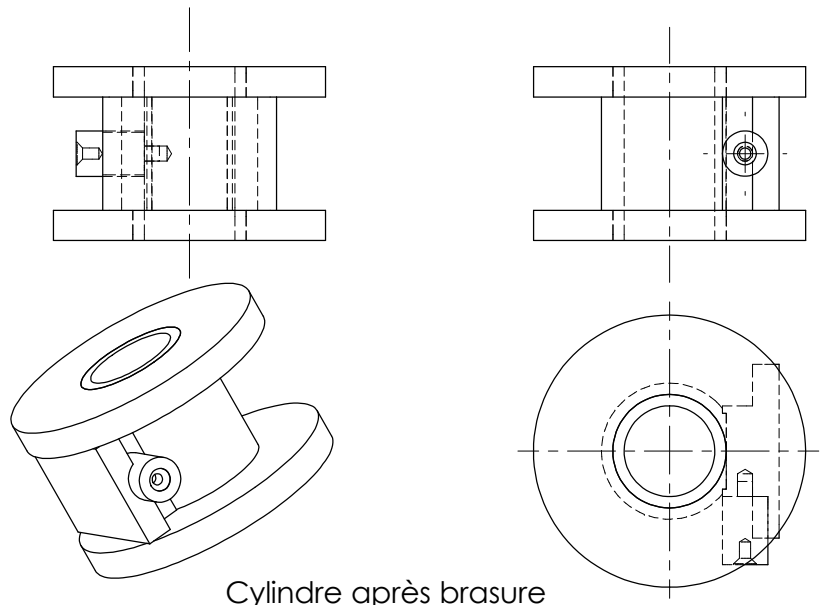
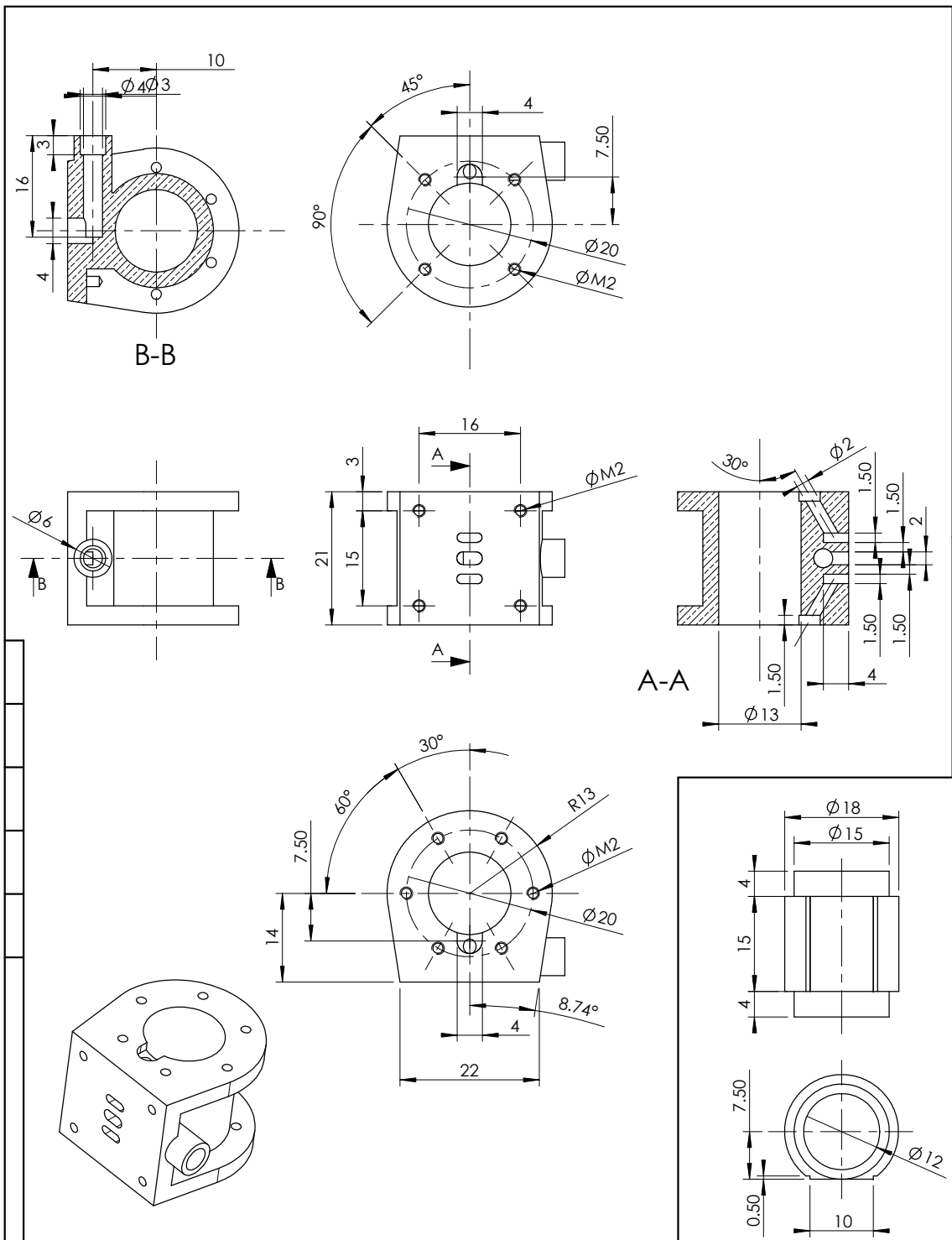
Echelle 1/1

ENSEMBLE - Projet 0

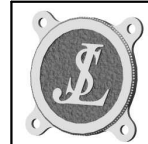
Novembre 2000

© JL Soumard - Commercialisation interdite.

MV-000a

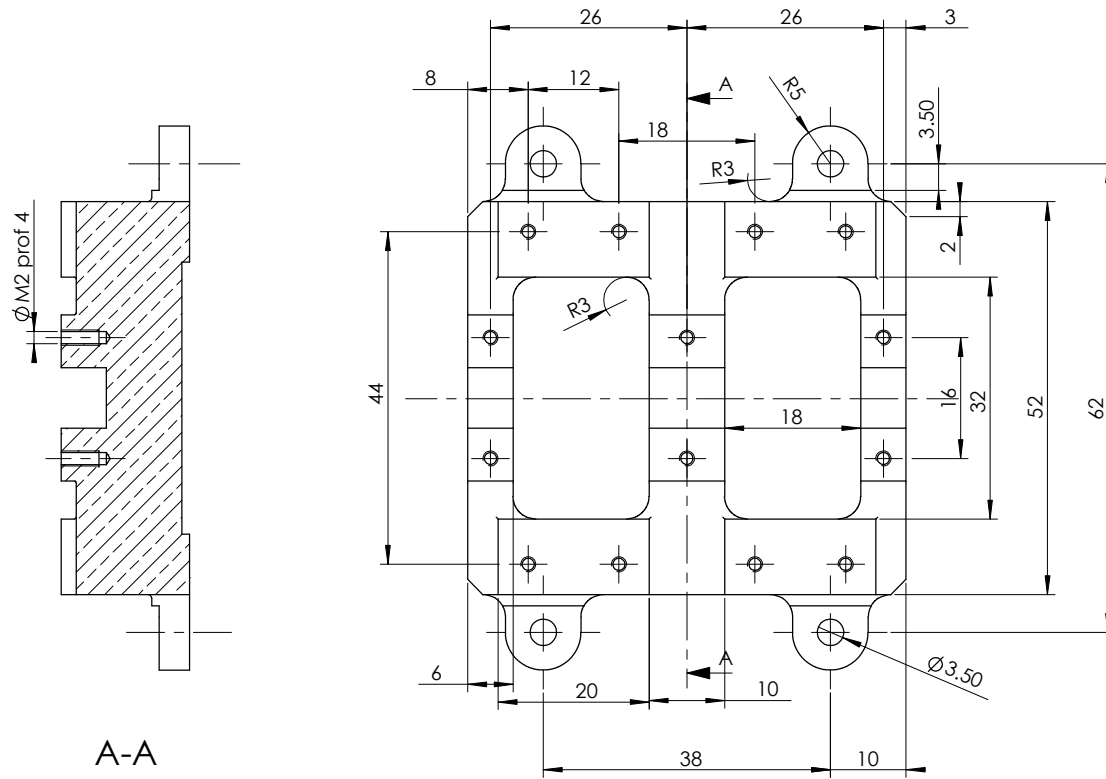
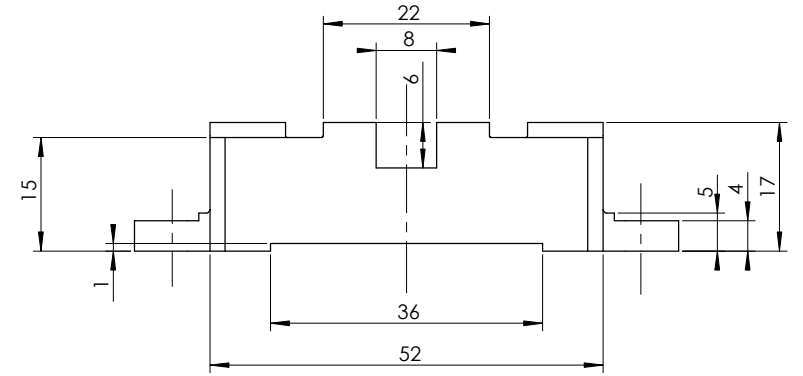
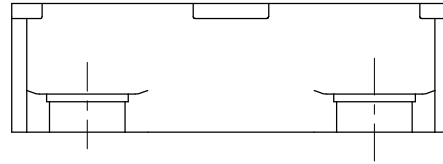


Cette distance représente 100mm

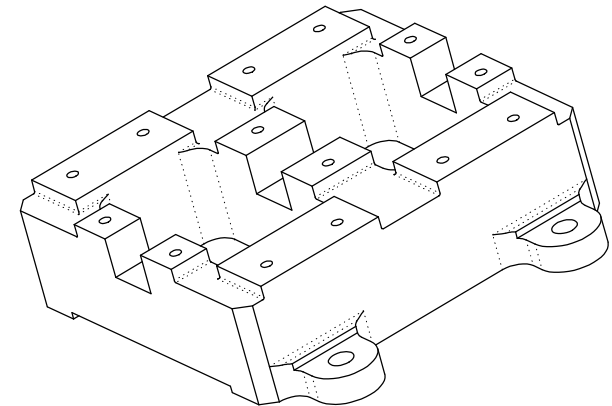


Moteur à vapeur bicylindre modèle JLS 13-2
CYLINDRE (Rep 11 ; 12)
 (2 pièces symétriques)
 © JL Soumard - Commercialisation interdite.

Echelle 1/1
 Janvier 2001
MV-002



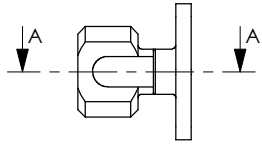
A-A



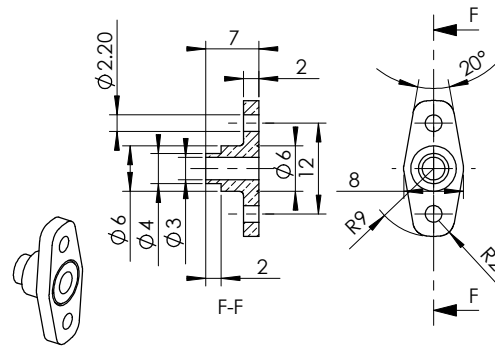
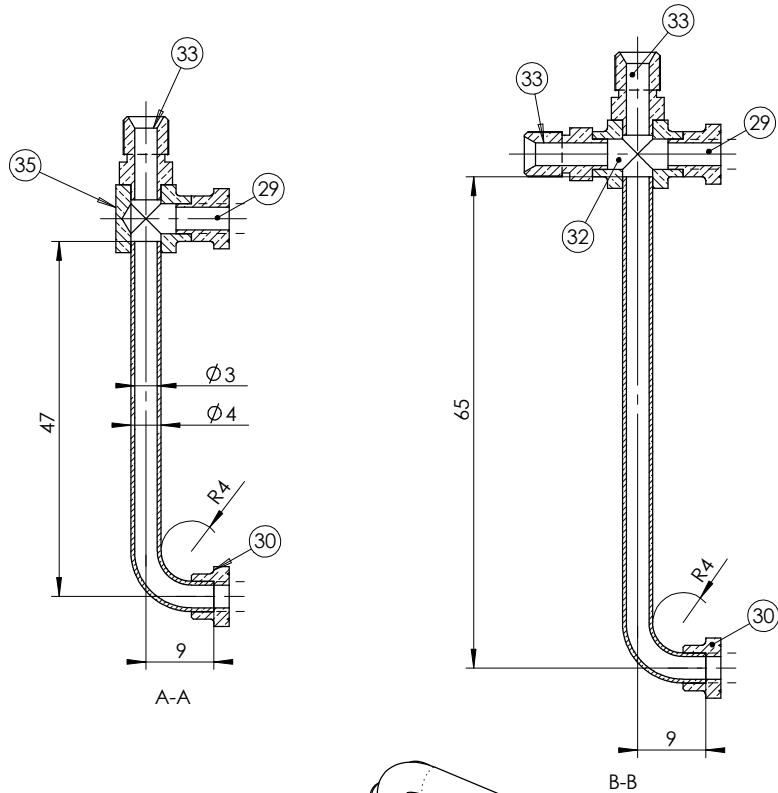
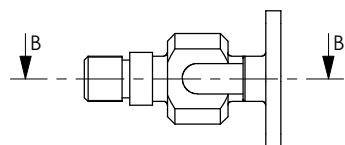
Cette distance représente 100mm

	Moteur à vapeur bicylindre modèle JLS 13-2	Echelle 1/1
	BATI (Rep 1)	Novembre 2000
	© JL Soumard – Commercialisation interdite.	MV-003

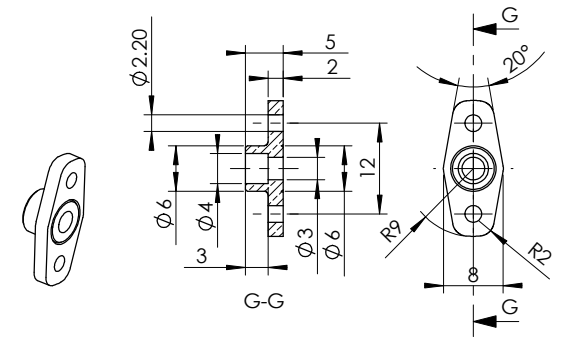
Echappement



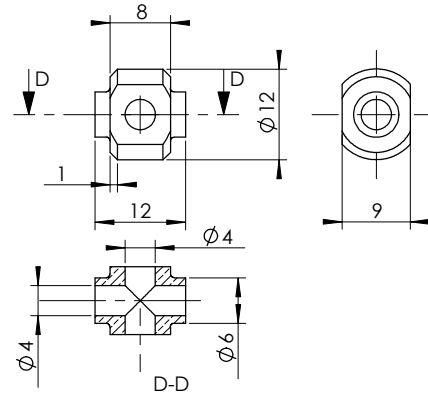
Admission



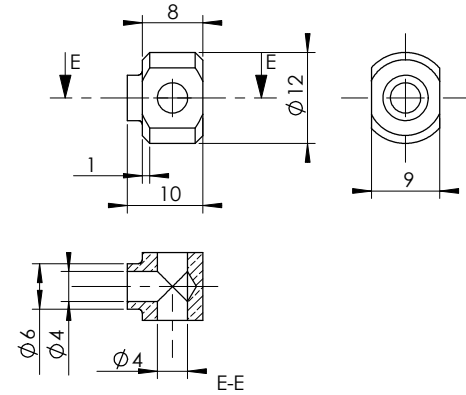
Bride Moteur Rep 29



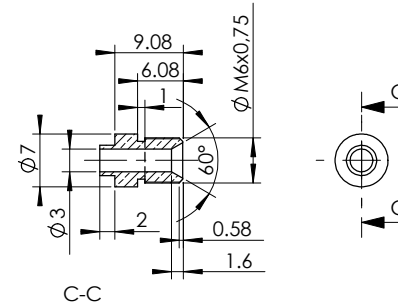
Bride pour tube Ø4x3 Rep 30



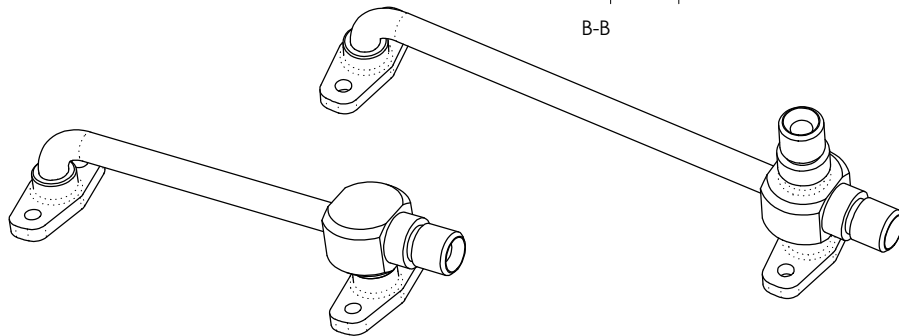
Collecteur Admission Rep 32



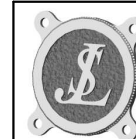
Collecteur Echappement Rep 35



Raccord Ø6 Rep 33



Cette distance représente 100mm



Moteur à vapeur bicylindre modèle JLS 13-2

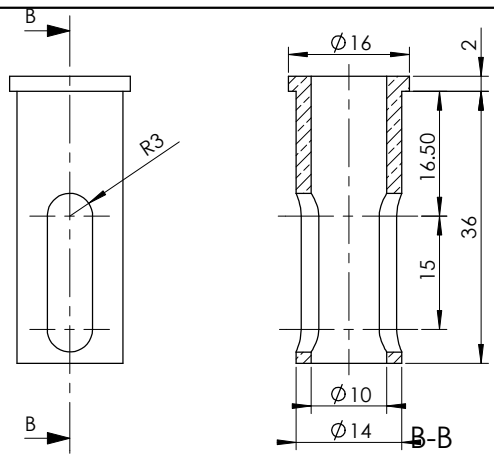
Echelle 1/1

TUYAUTERIES

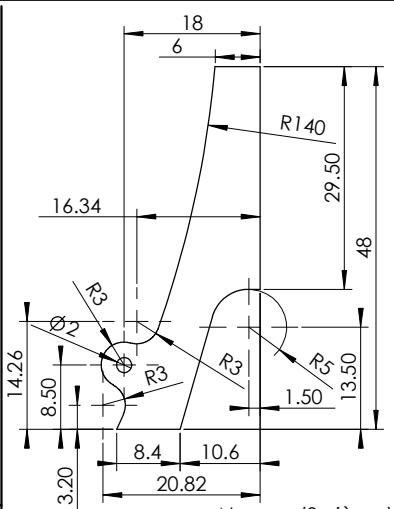
Novembre 2000

© JL Soumard - Commercialisation interdite.

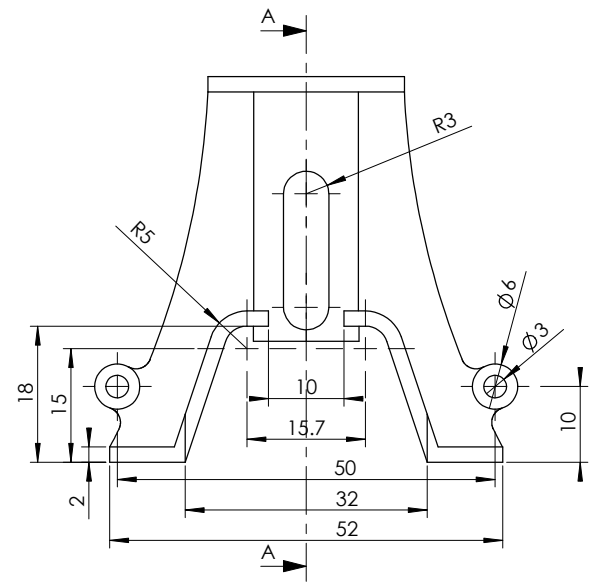
MV-005



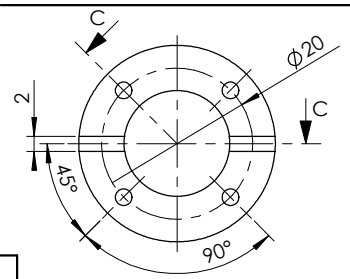
Corps (1 pièce)



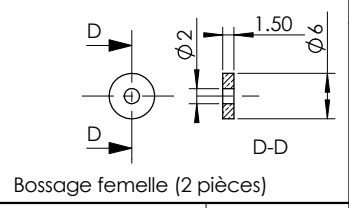
Nervure (2 pièces)



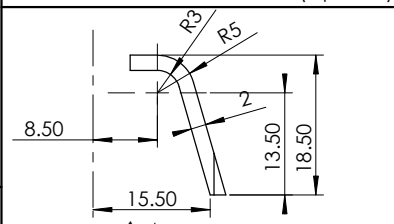
A-A



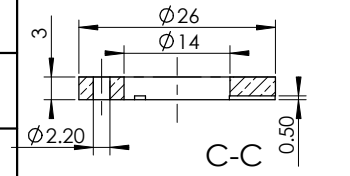
Flasque (1 pièce)



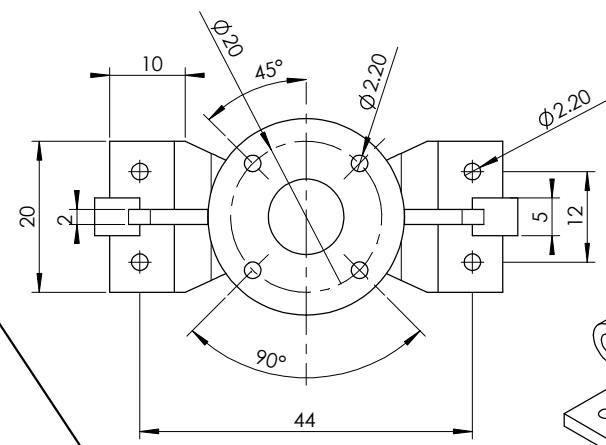
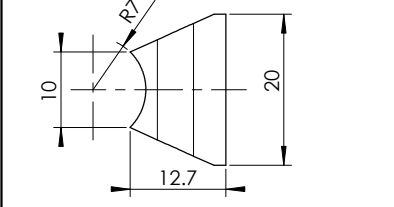
Bossage femelle (2 pièces)



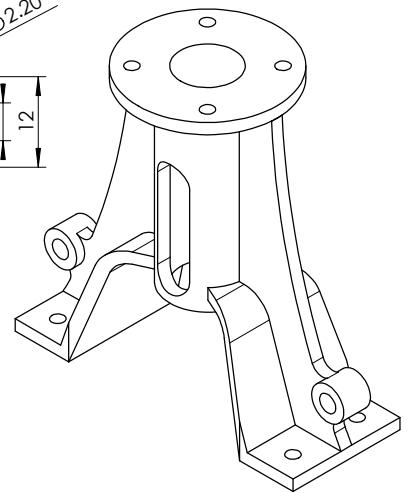
Pied (2 pièces)



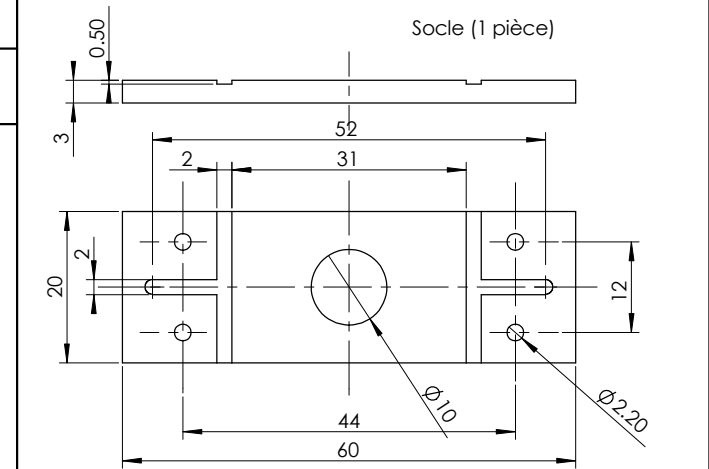
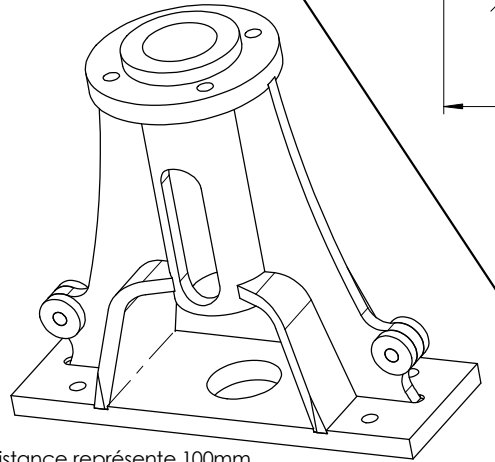
Bossage mâle (2 pièces)



Glissière usinée



Glissière après brasure



Socle (1 pièce)



Moteur à vapeur bicylindre modèle JLS 13-2

GLISSIERE (Rep 2)

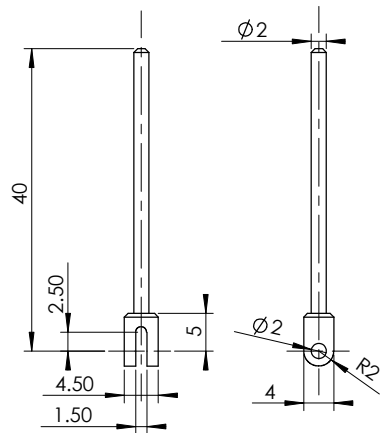
© JL Soumard – Commercialisation interdite.

Echelle 1/1

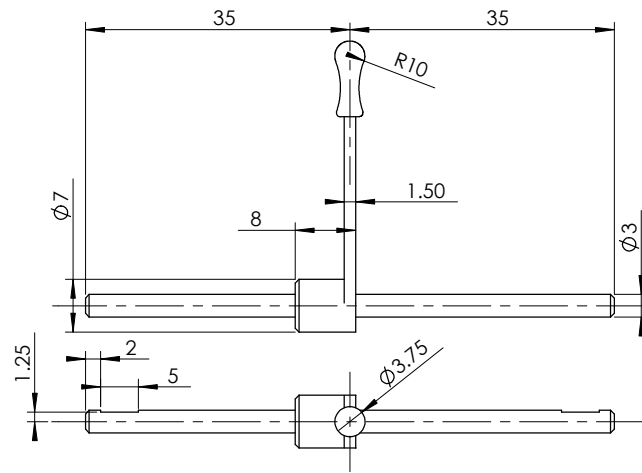
Décembre 2000

MV 006

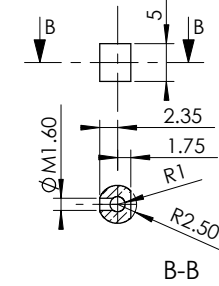
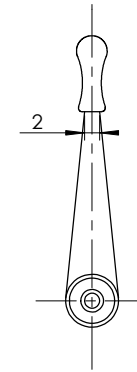
Cette distance représente 100mm



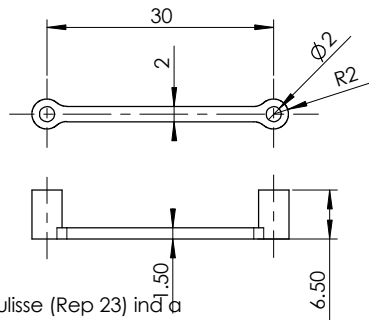
Tige de distribution (Rep 20) ind a



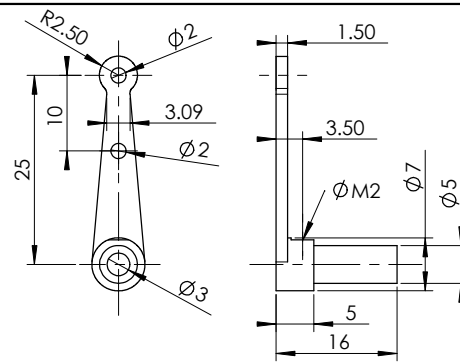
Commande de distribution (Rep 21)



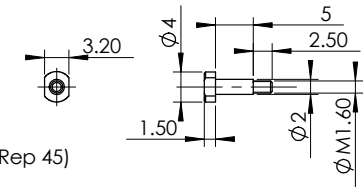
Bague de tiroir (Rep 26)



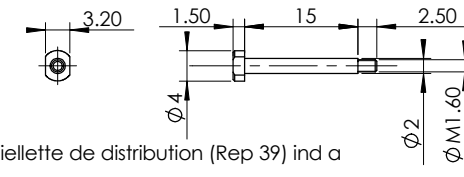
Biellette coulisse (Rep 23) ind a



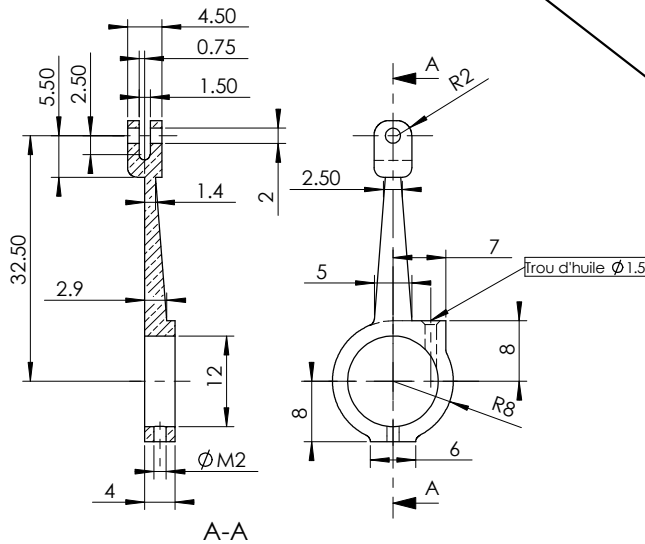
Biellette de commande (Rep 22)



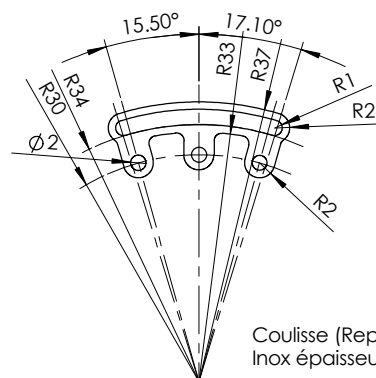
Axe de coulisse (Rep 45)



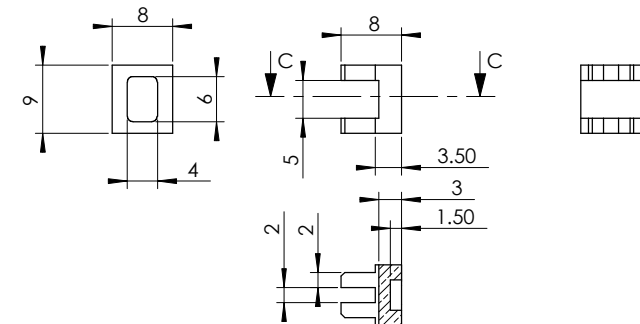
Axe de bielle de distribution (Rep 39) ind a



Bielle de distribution (Rep 17) ind a



Coulisse (Rep 18) ind a
Inox épaisseur 1,5

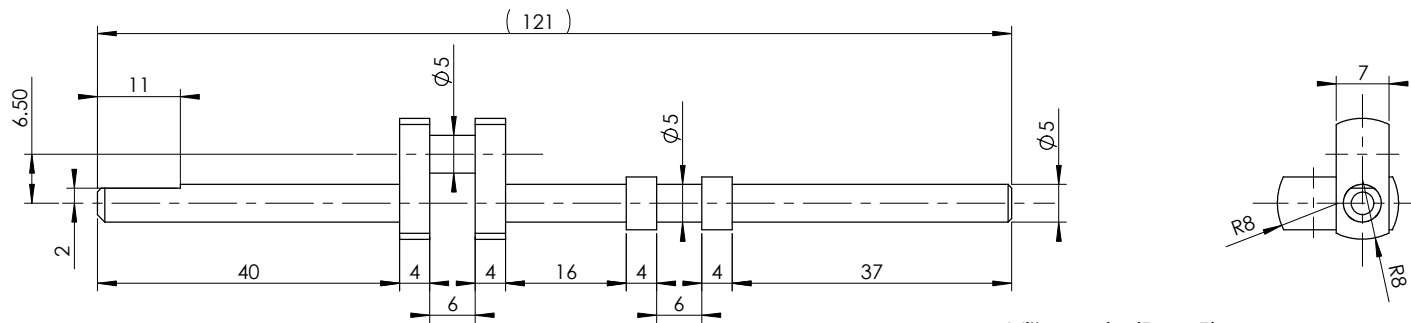


Tiroir (Rep 27)
C-C

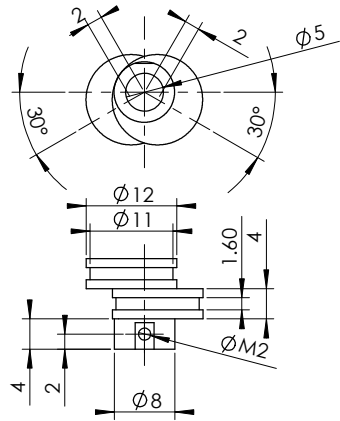
Indice a : modifications du 14-08-2002

	Moteur à vapeur bicylindre modèle JLS 13-2	Echelle 1/1
	DISTRIBUTION	Janvier 2001
© JL Soumard – Commercialisation interdite.		MV-007a

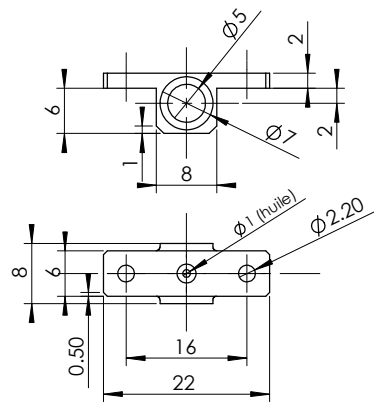
Cette distance représente 100mm



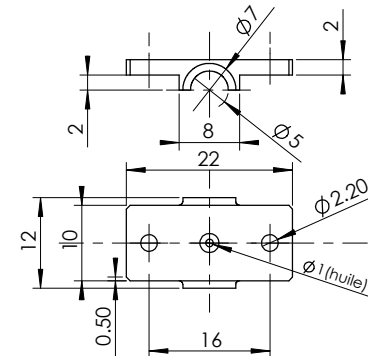
Vilbrequin (Rep 5)



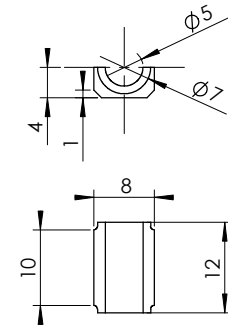
Excentrique (Rep 16)



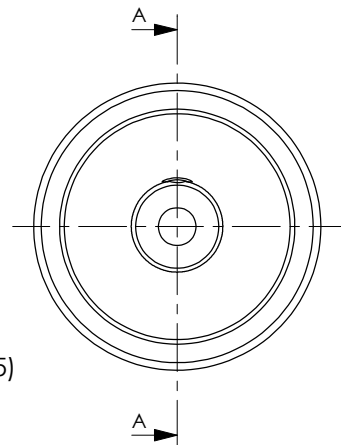
Palier Extérieur (Rep 4)



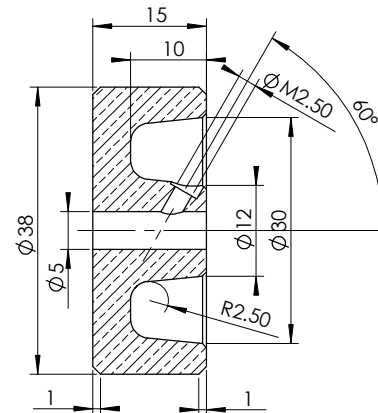
Palier Intérieur Supérieur (Rep 28)



Palier Intérieur Inférieur (Rep 38)

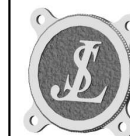


Volant (Rep 15)



A-A

Cette distance représente 100mm



Moteur à vapeur bicylindre modèle JLS 13-2

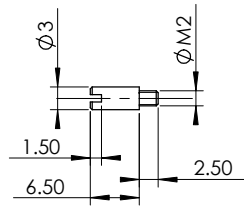
Echelle 1/1

LIGNE D'ARBRE

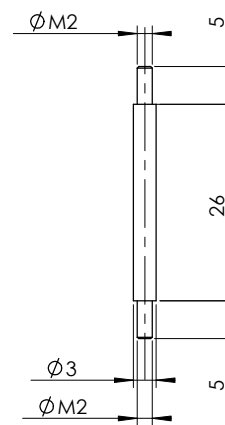
Janvier 2001

© JL Soumard – Commercialisation interdite.

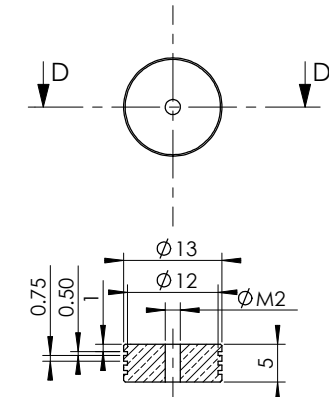
MV-009



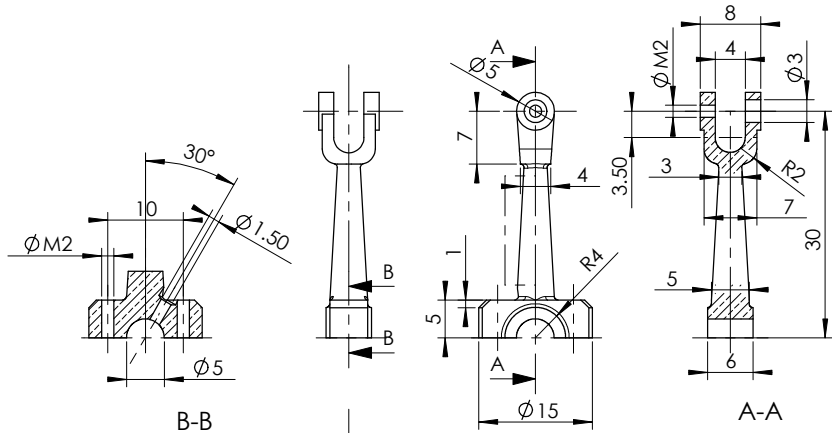
Axe de Tête de Bielle (Rep 44)



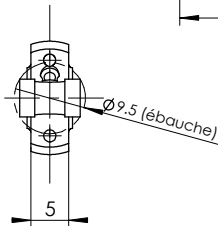
Tige de piston (Rep 9)



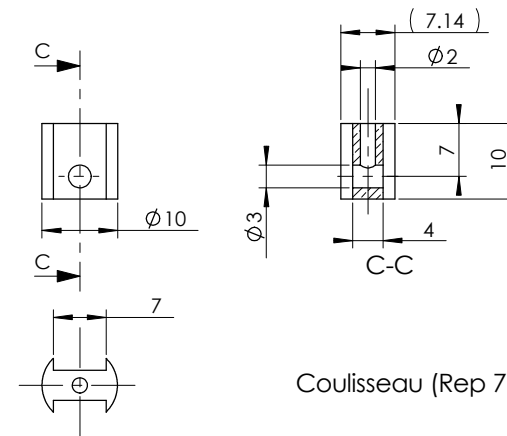
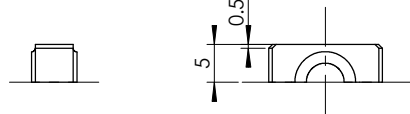
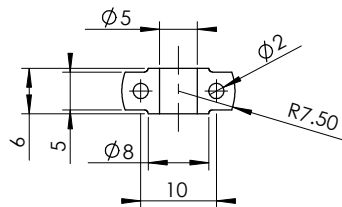
Piston (Rep 8)



Bielle (Rep 6)



Pied de Bielle (Rep 37)



Coulisseau (Rep 7)

Cette distance représente 100mm



Moteur à vapeur bicylindre modèle JLS 13-2

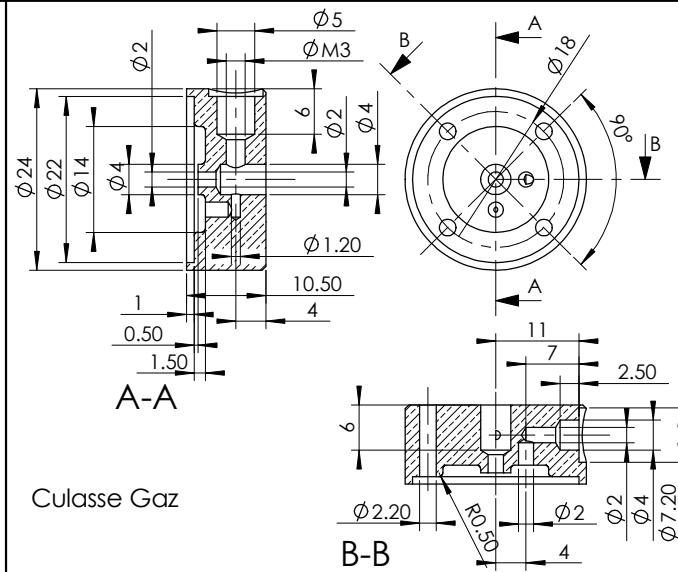
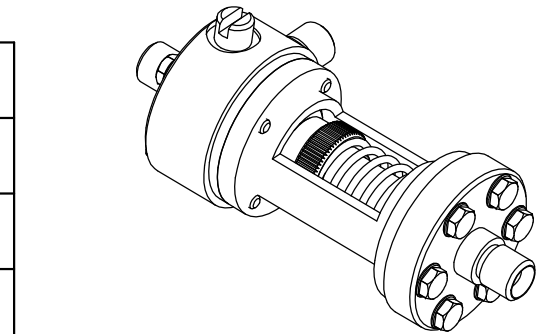
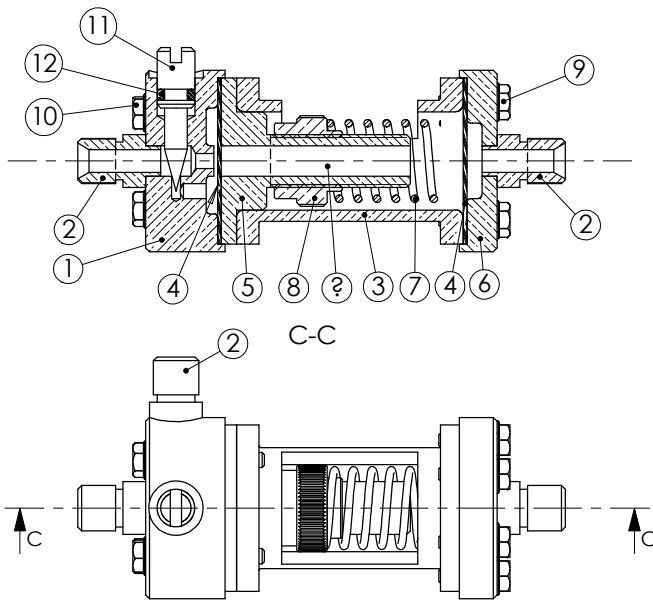
Echelle 1/1

EMBIELLAGE et PISTON

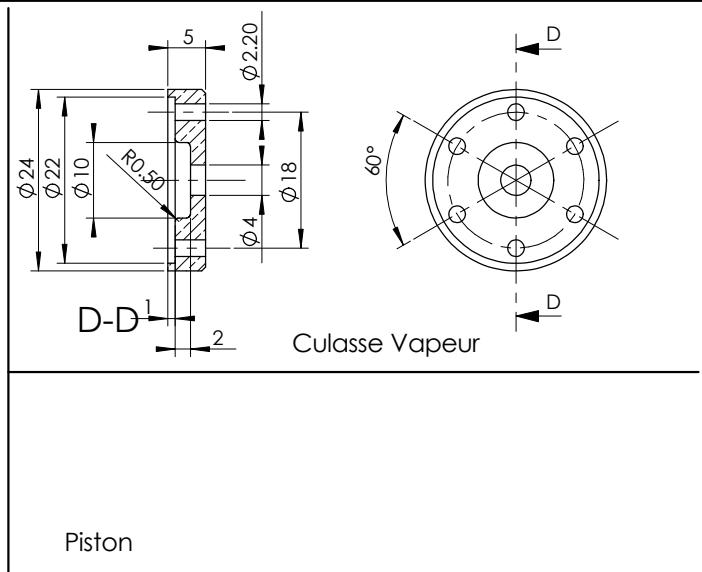
Janvier 2001

© JL Soumard – Commercialisation interdite.

MV-008

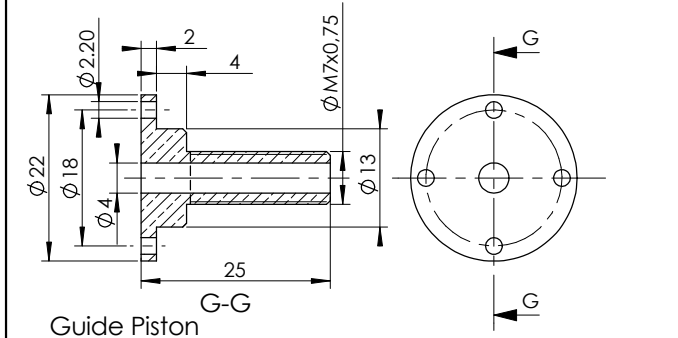


Culasse Gaz

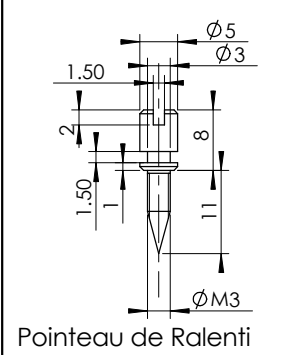


Culasse Vapeur

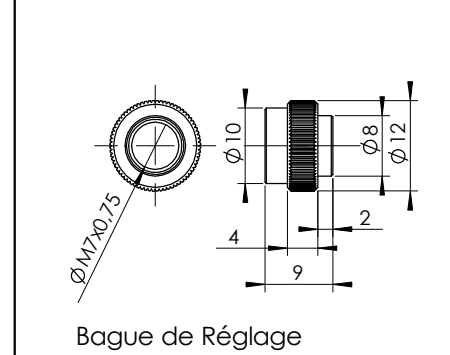
Piston



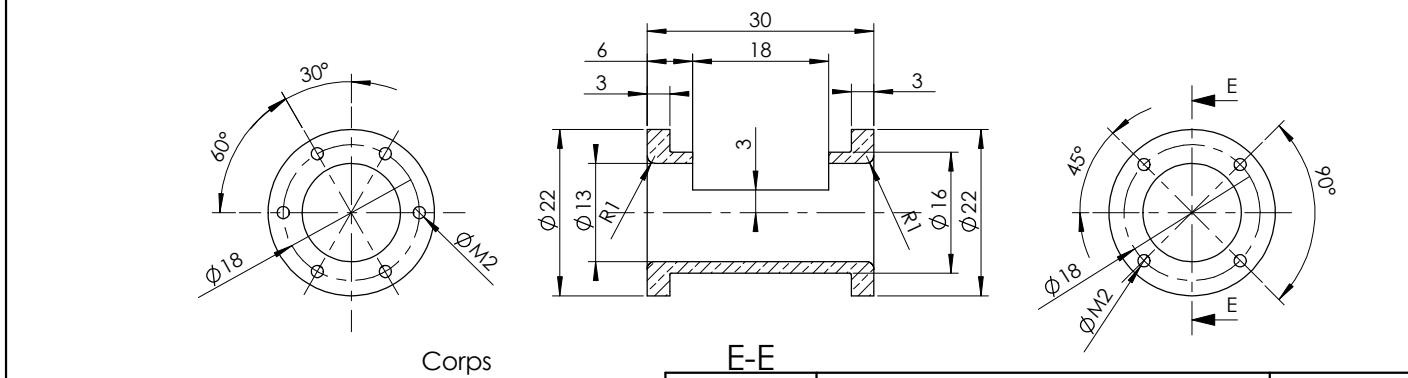
Guide Piston



Pointeau de Ralenti



Bague de Réglage

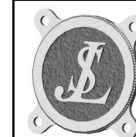


Corps

E-E

Rep	Qte	Désignation	Matière	Observations
1	1	Culasse Gaz	Laiton	
2	3	Raccord D6	Laiton	
3	1	Corps	Laiton	
4	2	Membrane	PTFE	
5	1	Guide Piston	Laiton	
6	1	Culasse Vapeur	Laiton	
7	1	Piston	Laiton	
8	1	Ressort 10_1_20	Acier	
9	1	Bague de Réglage	Laiton	
10	6	Vis HM2-08	Laiton	
11	4	Vis HM2-16	Laiton	
12	1	Pointeau de Ralenti	Laiton	
13	1	Joint Torique R0		Commerce

Cette distance représente 100mm



Régulateur Gaz

**ENSEMBLE
DETAILS**

© JL Soumard - Commercialisation interdite.

Echelle 1/1

Décembre 2000

RG-001